



SITE PLAN - CENTRAL FACILITIES

0 10 20 30 40 50 m



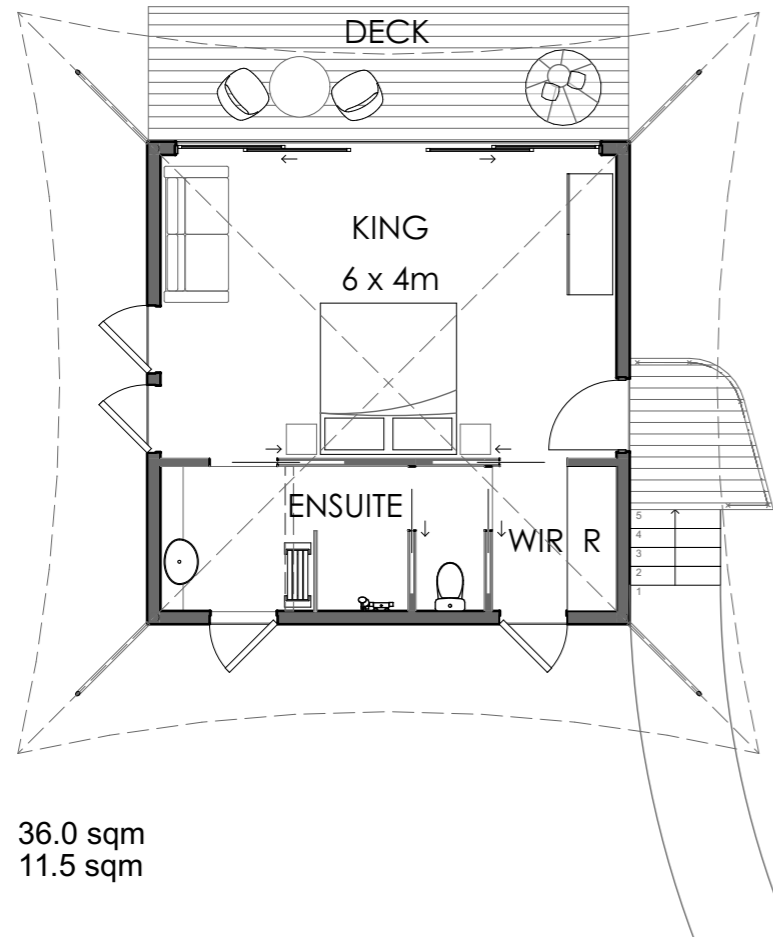
SCALE 1:1000 @ A3, SCALE 1:500 @ A1



COCOS ECO RESORT

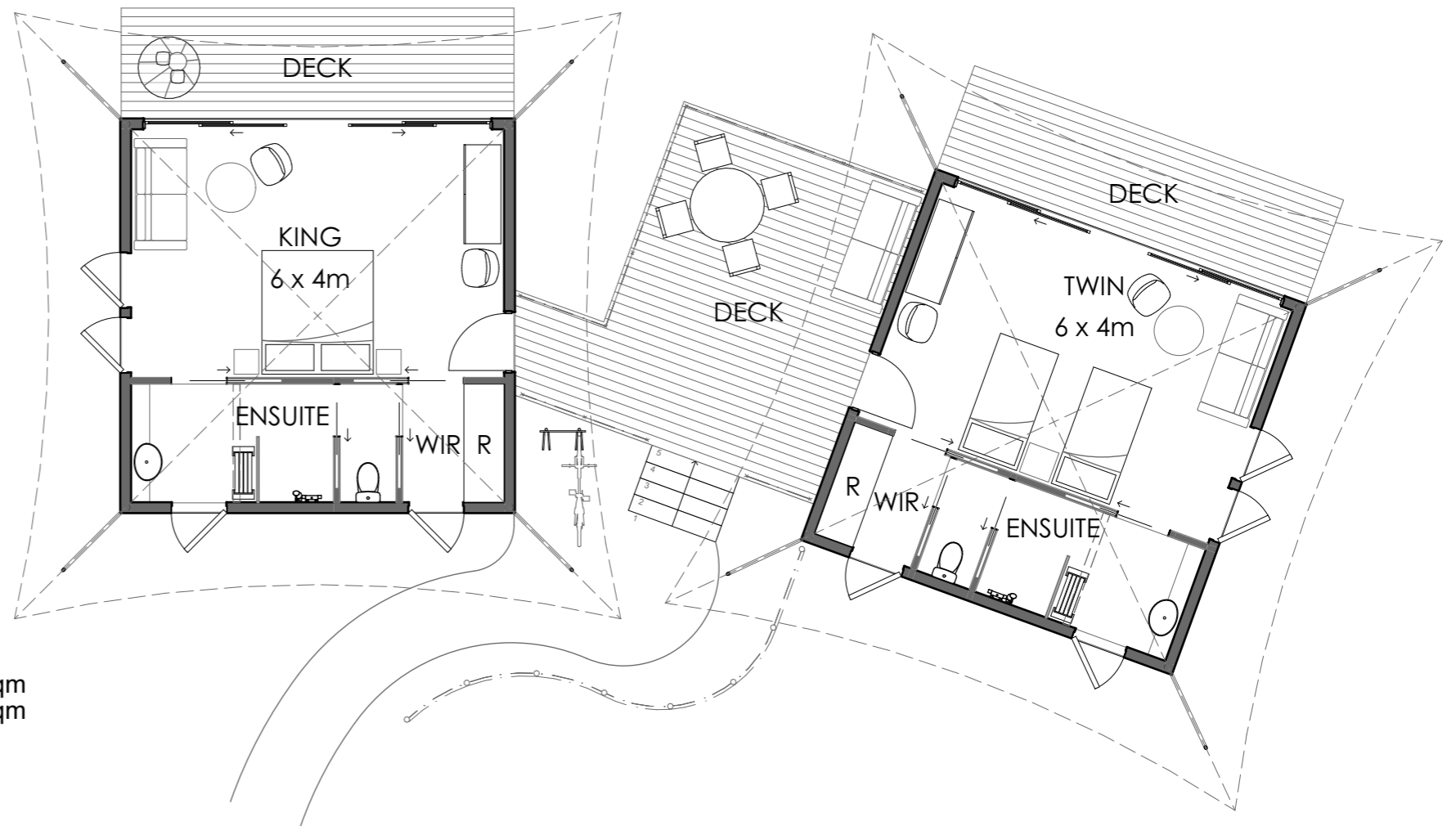
GKA
 GROUNDS KENT ARCHITECTS

PROJECT No: DATE: DRAWING No: REVISION:
 21022 12/07/21SK102 B
 13/07/21 12:26 PM CKI_Site.pln



INTERNAL 36.0 sqm
DECK 11.5 sqm

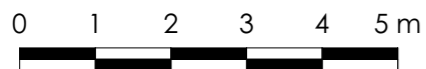
1 BED
Scale 1:100



INTERNAL 72.0 sqm
DECK 45.8 sqm

2 BED
Scale 1:100

FLOOR PLANS - VILLAS

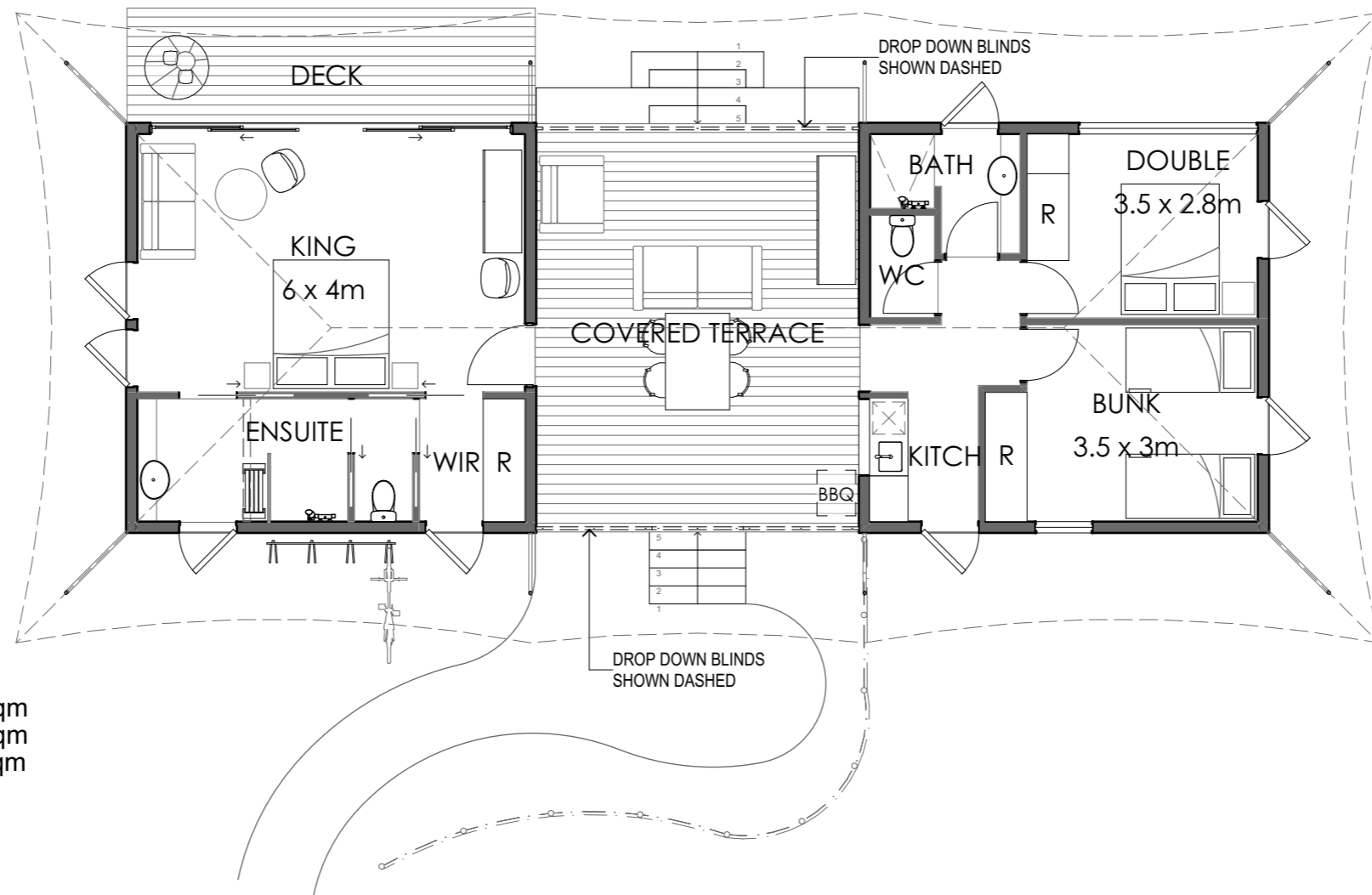


SCALE 1:100 @ A3

COCOS ECO RESORT

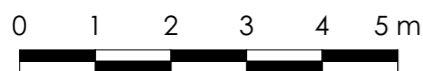
GKA
GROUNDS KENT ARCHITECTS

PROJECT No: DATE: DRAWING No: REVISION:
21022 12/07/21SK210 B
12/07/21 4:25 PM CKI_Site.pln



INTERNAL 72.0 sqm
 COVERED TERRACE 32.0 sqm
 DECK 11.5 sqm

FLOOR PLAN - 3 BED VILLA



SCALE 1:100 @ A3

COCOS ECO RESORT



PROJECT No: DATE: DRAWING No: REVISION:
 21022 12/07/21SK310 B
 12/07/21 4:25 PM CKI_Site.pln



PERSPECTIVE - TENT VILLAS

COCOS ECO RESORT

GKA
GROUNDS KENT ARCHITECTS

PROJECT No.	DATE	DRAWING No.	REVISION
21022	12/07/21		A

12/07/21 4:25 PM CKI_Site.pln



PERSPECTIVE - TENT VILLAS

COCOS ECO RESORT

GKA
GROUNDS KENT ARCHITECTS

PROJECT No: DATE: DRAWING No.: REVISION:
21022 12/07/21 A
12/07/21 4:25 PM CKI_Site.pln



PERSPECTIVE - TENT VILLAS

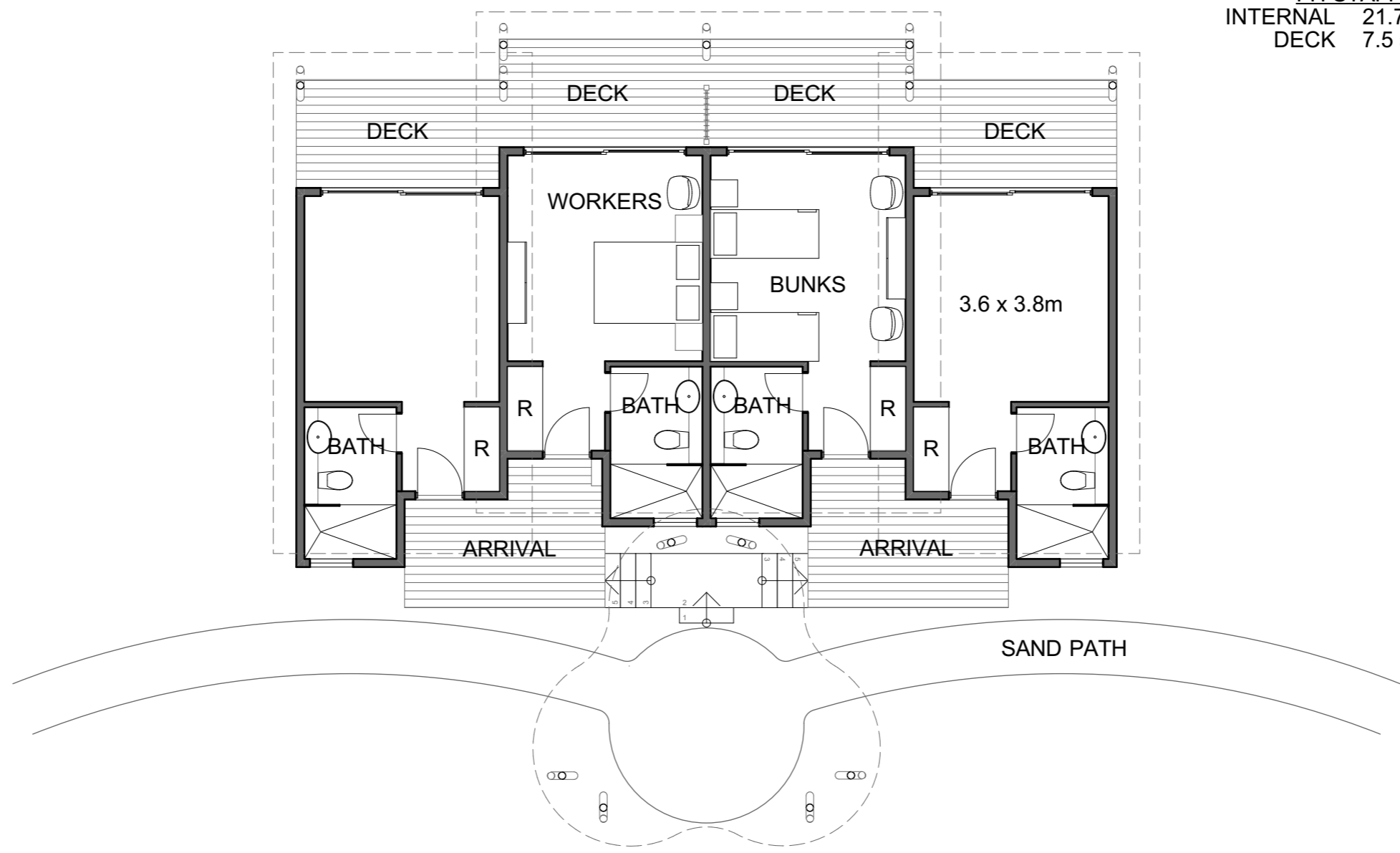
COCOS ECO RESORT

GKA
GROUNDS KENT ARCHITECTS

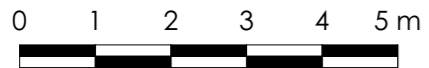
PROJECT No.	DATE	DRAWING No.	REVISION
21022	12/07/21		A

12/07/21 4:25 PM CKI_Site.pln

FH STAFF
 INTERNAL 21.75 sqm
 DECK 7.5 sqm

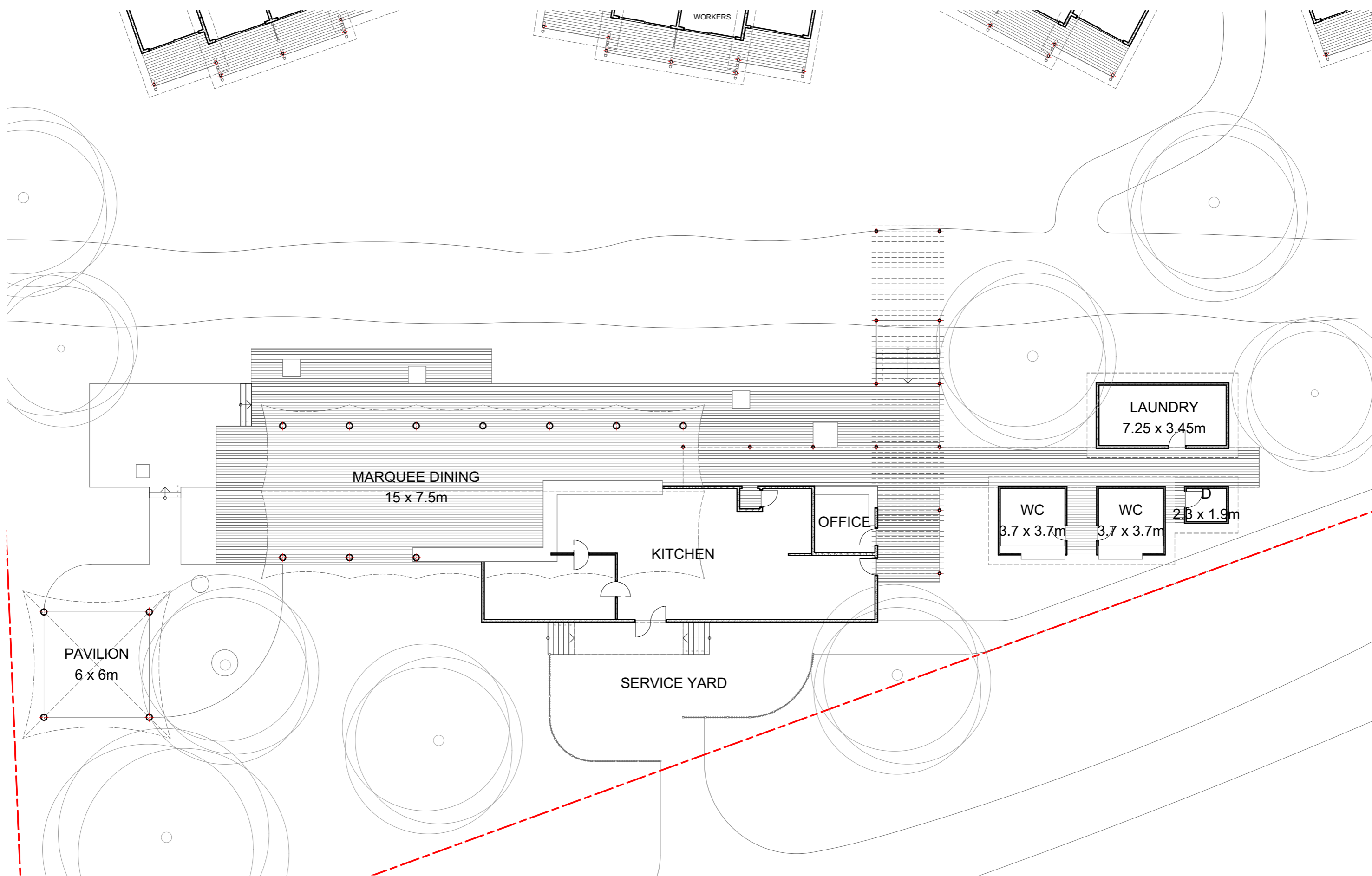


FLOOR PLAN - BACKPACKERS



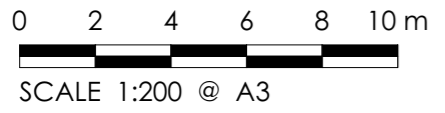
SCALE 1:100 @ A3

COCOS ECO RESORT



FLOOR PLAN - HEARTBREAK BEACH CAFE

COCOS ECO RESORT



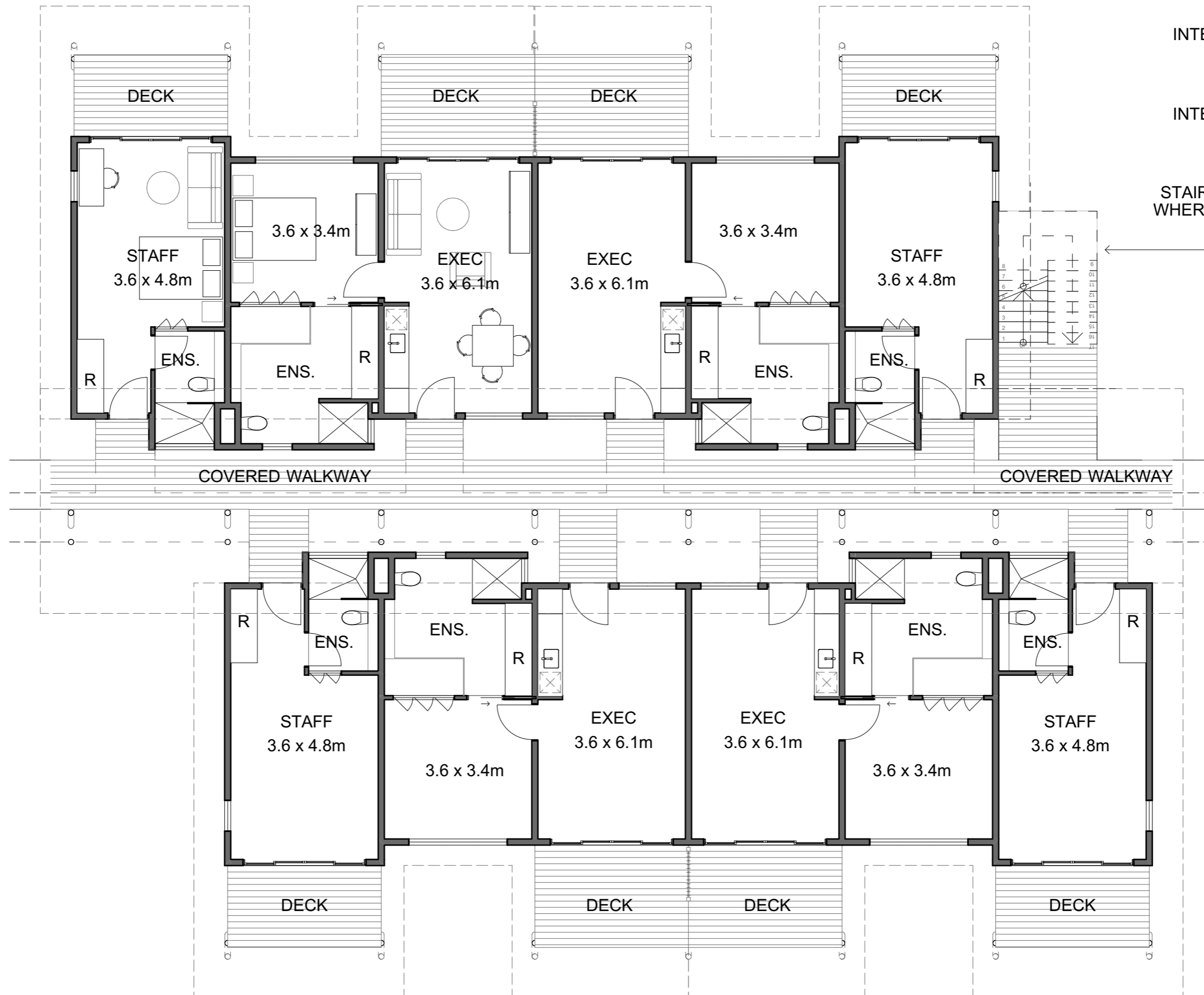


PERSPECTIVE - BACKPACKERS

COCOS ECO RESORT

GKA
GROUNDS KENT ARCHITECTS

PROJECT No: DATE DRAWING No. REVISION
21022 12/07/21 A
12/07/21 4:25 PM CKI_Site.ph



STAFF
 INTERNAL 24.8 sqm
 DECK 7.5 sqm

EXECUTIVE
 INTERNAL 47.1 sqm
 DECK 9.5 sqm

FLOOR PLAN - EXECUTIVE

0 1 2 3 4 5m

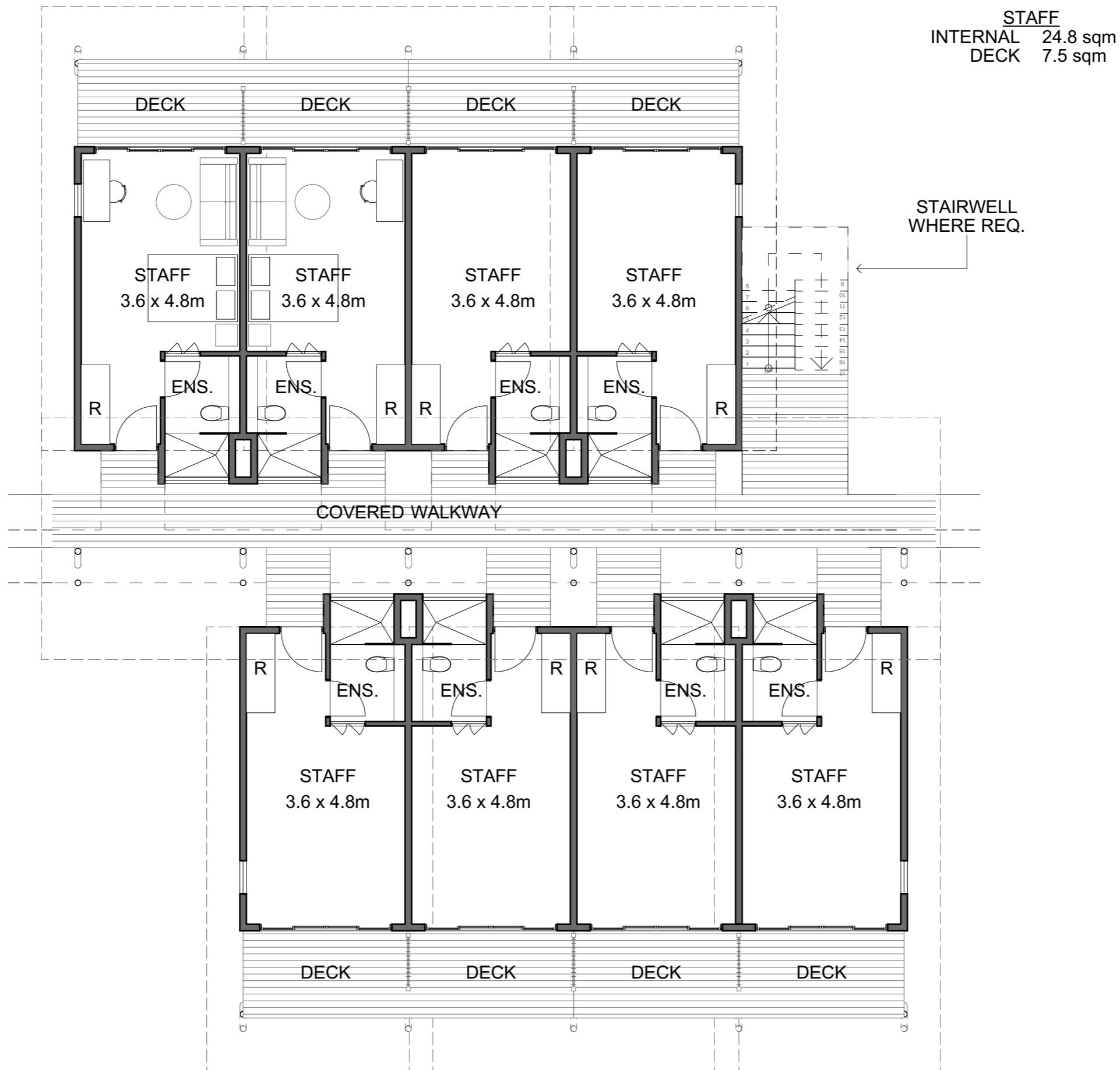


SCALE 1:100 @ A3

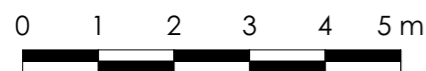
COCOS ECO RESORT

GKA
 GROUNDS KENT ARCHITECTS

PROJECT No: 21022 DATE: 12/07/21 DRAWING No: SK510 REVISION: B
 12/07/21 4:25 PM CKI_Site.pln



FLOOR PLAN - STAFF



SCALE 1:100 @ A3

COCOS ECO RESORT



PROJECT No: 21022 DATE: 12/07/21SK410 DRAWING No: REVISION: B
 12/07/21 4:25 PM CKI_Site.pln



PERSPECTIVE - STAFF BLOCK

COCOS ECO RESORT

GKA
GROUNDS KENT ARCHITECTS

PROJECT No	DATE	DRAWING No.	REVISION
21022	12/07/21		A
12/07/21 4:25 PM CKI_Site.ph			



PERSPECTIVE - STAFF BLOCK

COCOS ECO RESORT

GKA
GROUNDS KENT ARCHITECTS

PROJECT No	DATE	DRAWING No.	REVISION
21022	12/07/21		A

12/07/21 4:25 PM CKI_Site.pln



PERSPECTIVE - STAFF BLOCK

COCOS ECO RESORT

GKA

GROUNDS KENT ARCHITECTS

PROJECT No: DATE DRAWING No. REVISION

21022 12/07/21 A

12/07/21 4:25 PM CKI_Site.ph