

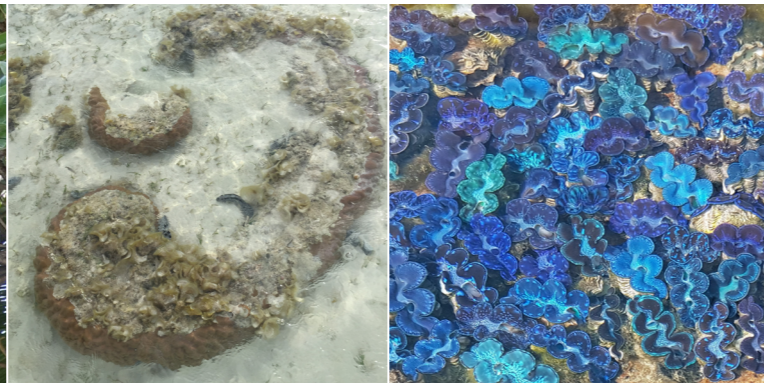
### REFORESTATION OF NATIVE SPECIES

A dedicated planting program to reintroduce indigenous fauna to the site. Progressive removal of non-indigenous species. Potential opportunities for interactive guest experiences.



### MARINE SENSITIVITY

Protect, educate and provide opportunities for observation of the islands pristine marine environment and species that thrive within it.



### NATURAL HABITATS

Preserve and provide opportunities for guests to observe and immerse themselves in the islands distinct existing habitat.



### TREAD LIGHTLY

Prioritise a site sensitive approach to design, construction, operation, visitation and exploration of the site and its natural environment.



### EDUCATION & AWARENESS

An opportunity for the natural environment to guide its guests. Provide a forum for education and caring conservation of the Islands unique and sensitive environment.



### ECO TOURS

Sharing the unique and sensitive environment through guided tours and sustainably focused over and under water island experiences.



### ISLAND BIRDLIFE & MARINE SPECIES

Facilitate a global interest and enhance the potential for the bird migration, breeding and natural habitat for birdlife and the islands' extensive 'marine community'.



### NATURE TRAILS

Curate site sensitive nature trails and eye opening adventures that accommodate for all age groups and levels of enthusiasm.



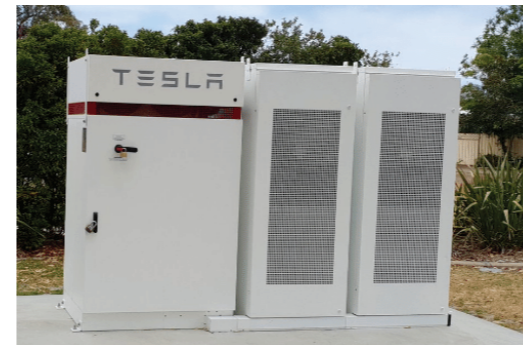
ECO TOURISM

COCOS ECO RESORT

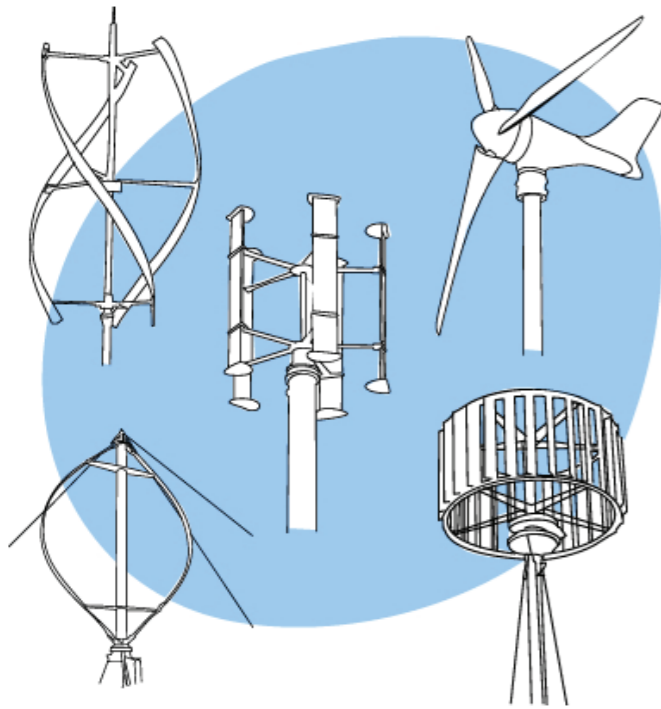
Solar panel power



Desanlination



Max Capacity Battery Storage



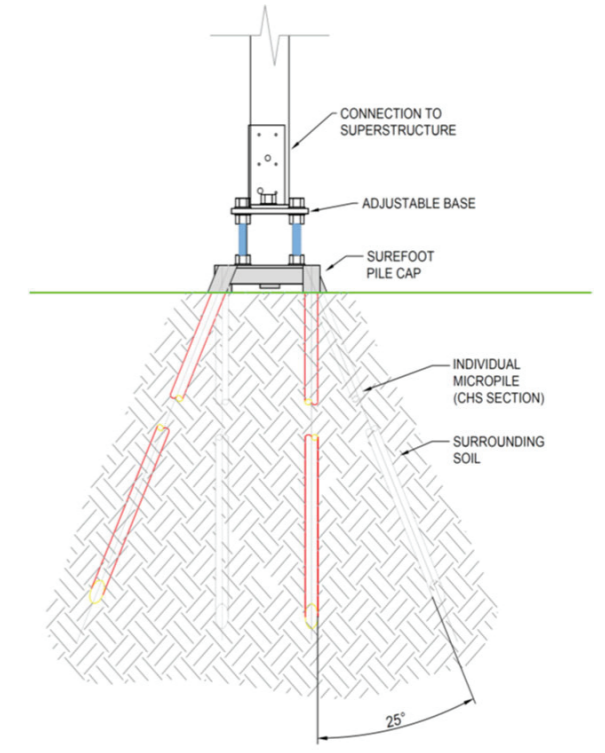
Wind Turbine (Options)



E-Bikes & Vehicles



Modular Building Components



Non Invasive Footing System

SUSTAINABLE PRINCIPLES

COCOS ECO RESORT