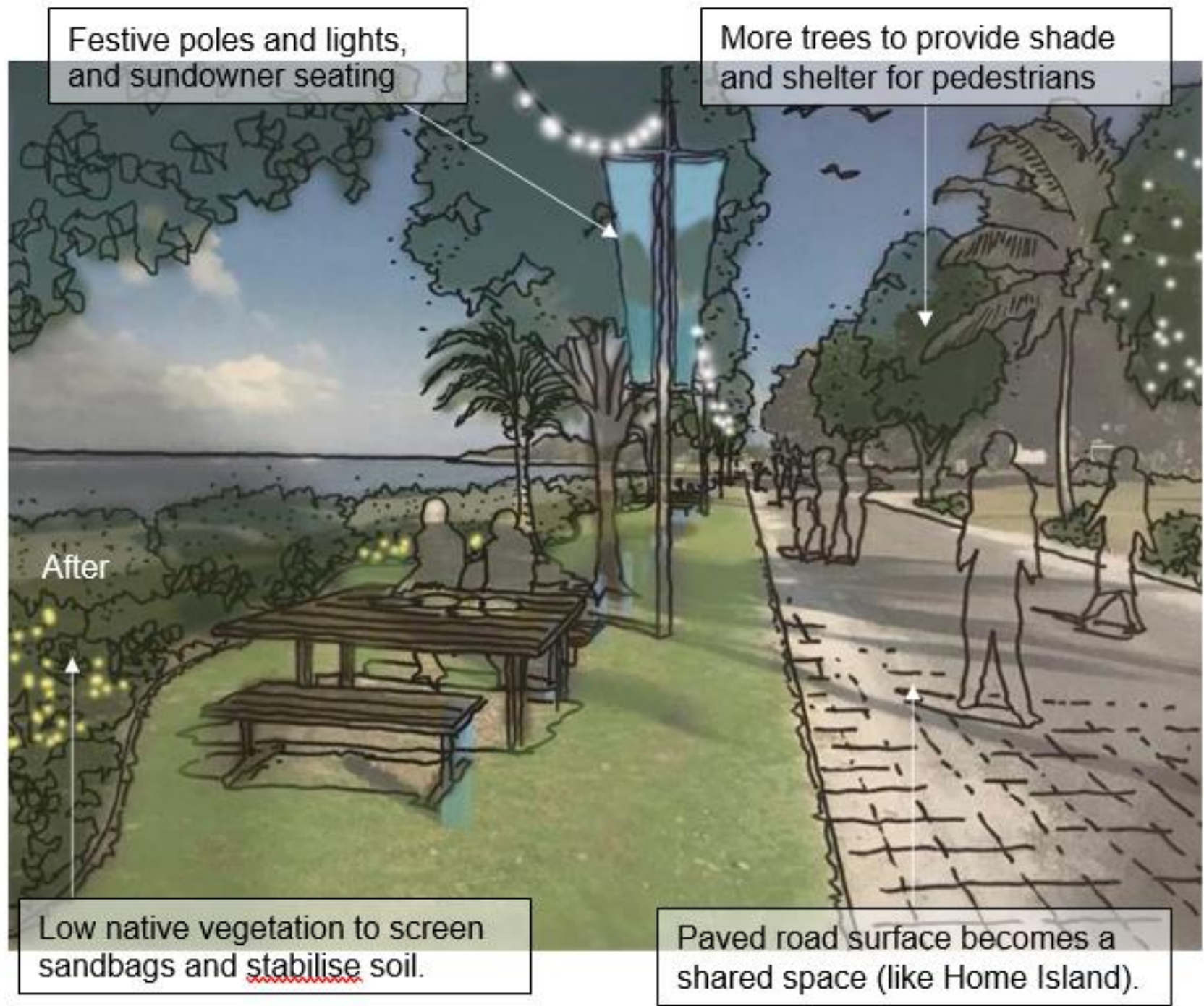




William Keeling Crescent

**Shire of Cocos (Keeling) Islands**



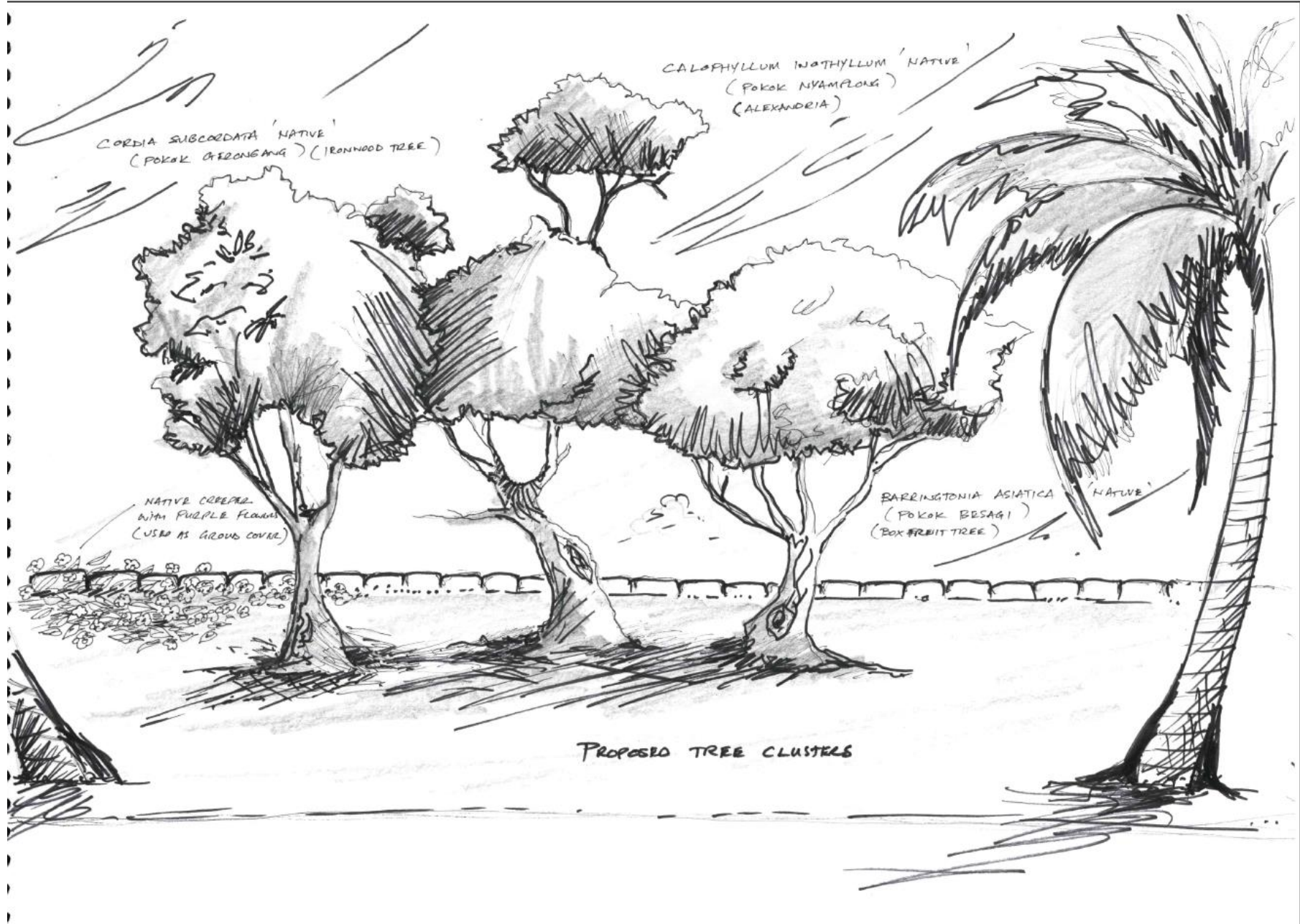
Festive poles and lights,  
and sundowner seating

More trees to provide shade  
and shelter for pedestrians

After

Low native vegetation to screen  
sandbags and stabilise soil.

Paved road surface becomes a  
shared space (like Home Island).



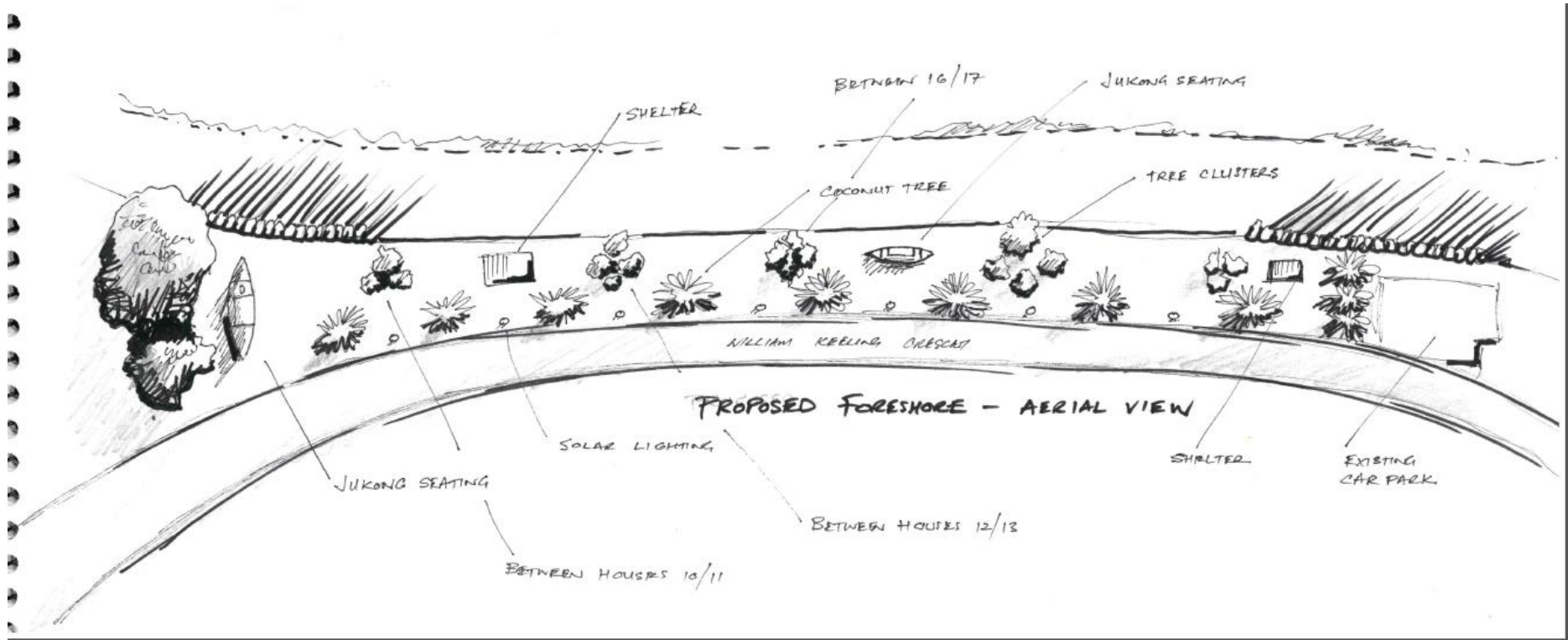
CORDIA SUBCORDATA 'NATIVE'  
(POKOK APERANGANG) (IRONWOOD TREE)

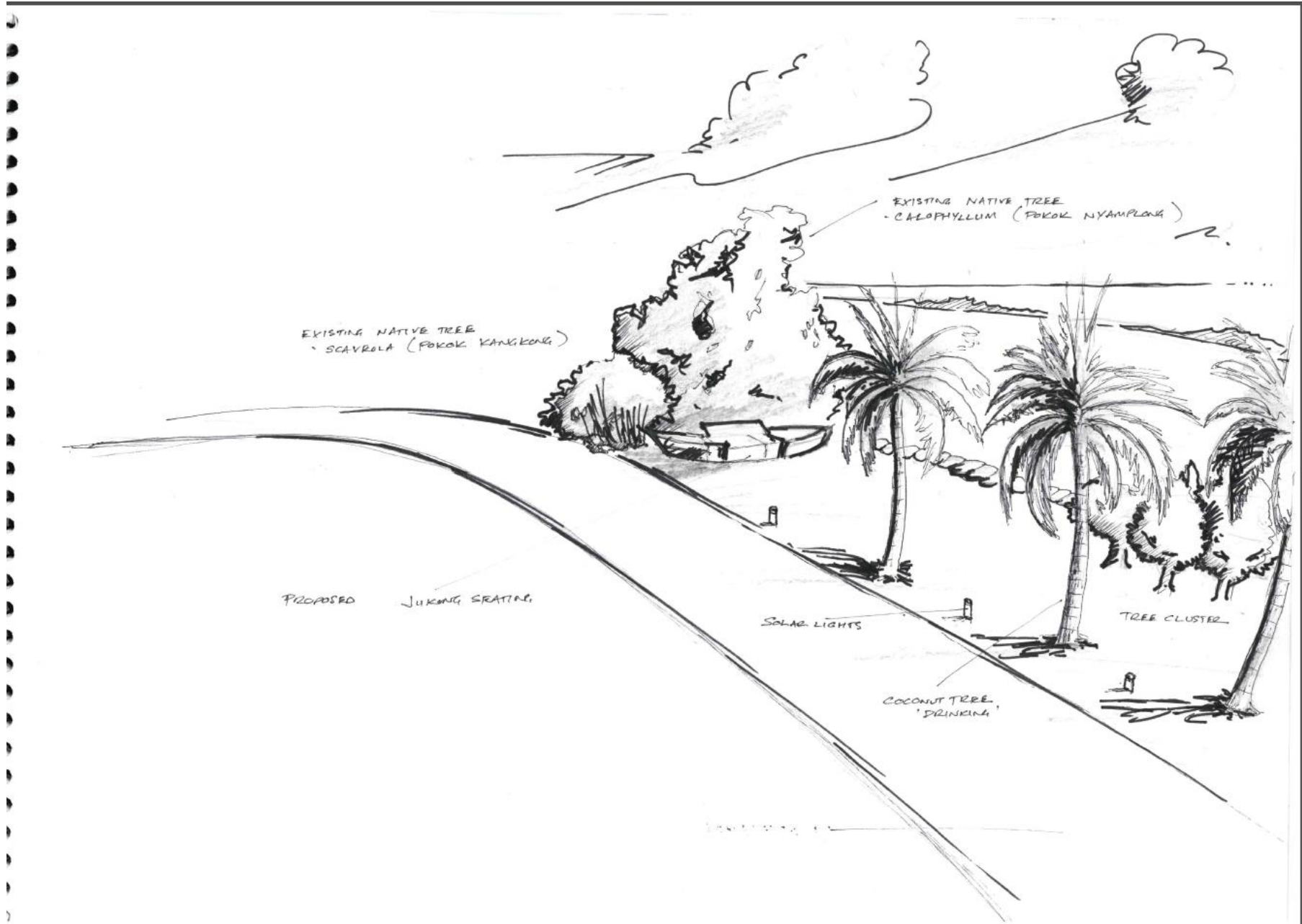
CALOPHYLLUM INATHYLLUM 'NATIVE'  
(POKOK NYAMPONG)  
(ALEXANDRIA)

NATIVE CEREAL  
WITH PURPLE FLOWERS  
(USED AS GROUND COVER)

BARRINGTONIA ASIATICA 'NATIVE'  
(POKOK BESAGI)  
(BOX FRUIT TREE)

PROPOSED TREE CLUSTERS





EXISTING NATIVE TREE  
- SCAVOLA (POKOK KANGKONG)

EXISTING NATIVE TREE  
- CALOPHYLLUM (POKOK NYAMPLONG)

PROPOSED JUKANG SRATING

SOLAR LIGHTS

TREE CLUSTER

COCONUT TREE  
'DRINKING'